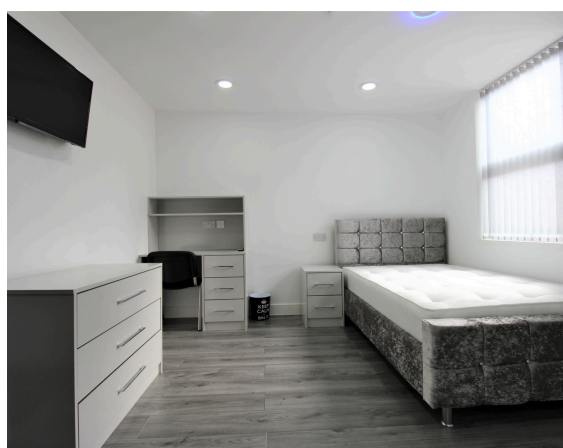
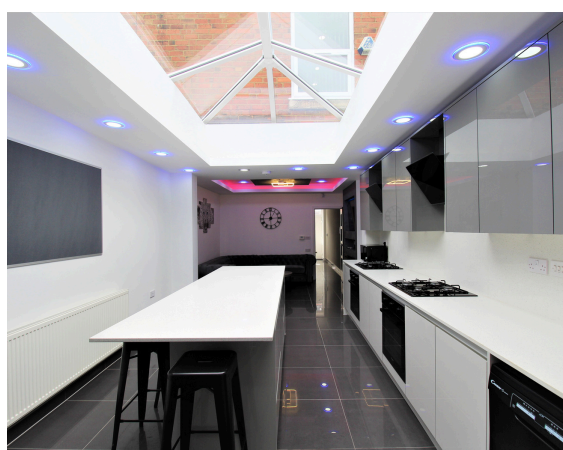


81 Dawlish Road, Selly Oak, Birmingham, B29 7AF



6



6



C

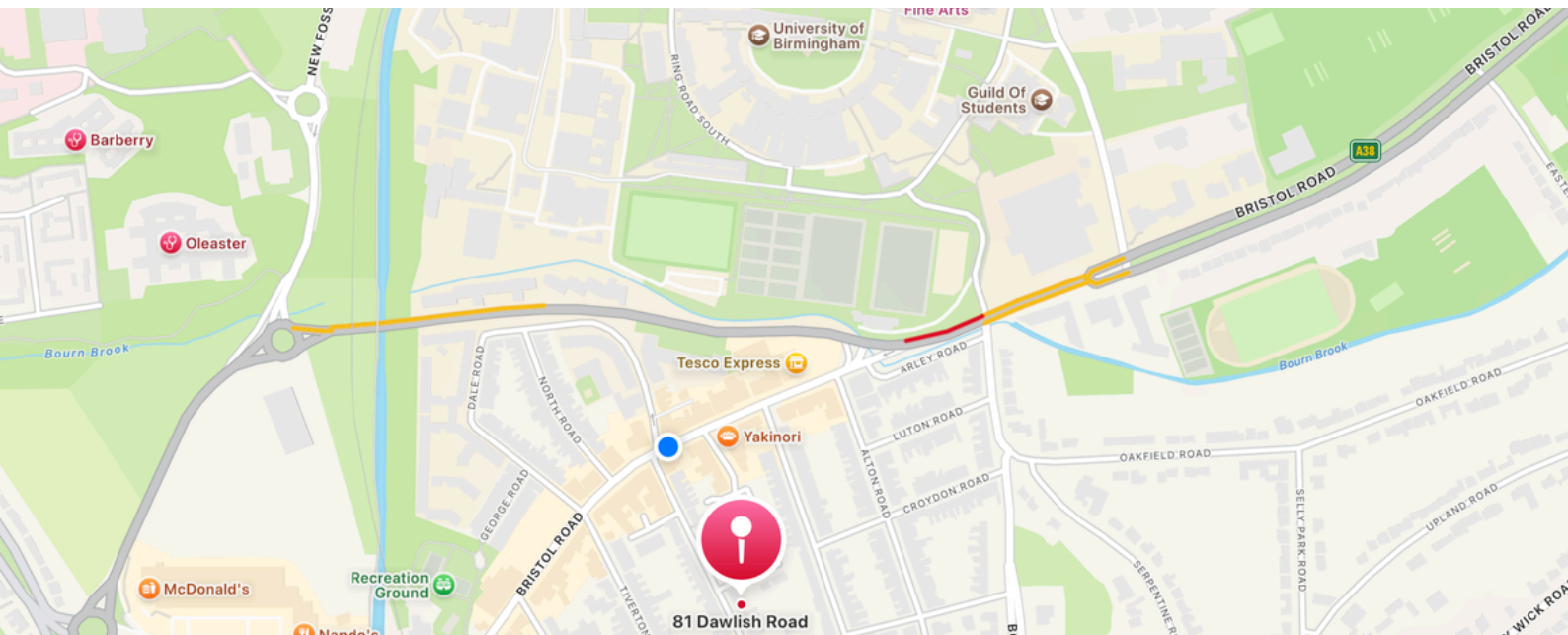
About this Property

Situated in the heart of Selly Oak, this 6 en-suite bedroom property offers a stylish and practical living space, perfect for students. The open-plan living area features a comfortable lounge with plush seating, a dining space, and a modern fully equipped kitchen, complete with high-end appliances, ample storage, and plenty of counter space. Each spacious bedroom includes a private en-suite bathroom, a study desk, and generous storage. Located just a short walk from the University of Birmingham and essential local amenities, this home delivers both comfort and convenience for student living.



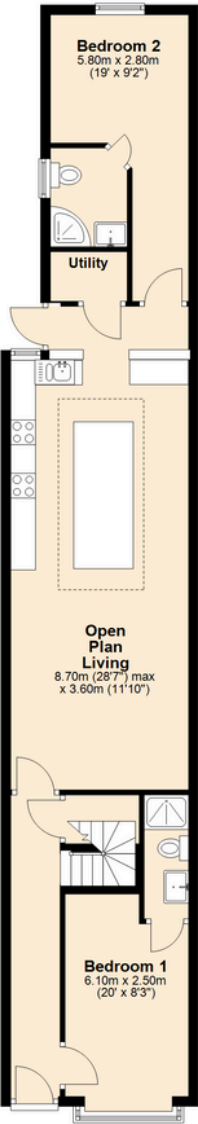
Key Features:

- Prime Location: A short walk to the University of Birmingham, Bristol Road, local stores, and local attractions.
- 6 En-Suite Bedrooms: Each bedroom features a private, immaculate en-suite bathroom.
- Crushed velvet beds
- Grey flooring throughout the property
- Open-Plan Kitchen/Lounge
- Unique Lighting Options: Stunning lighting options, including a plastered down ceiling with bright spotlights and LED changing lights.
- Large, flat-screen smart TVs
- A skylight in the kitchen area floods the space with natural light, creating a bright and welcoming atmosphere

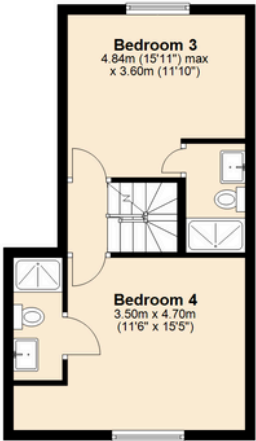


Floor Plan

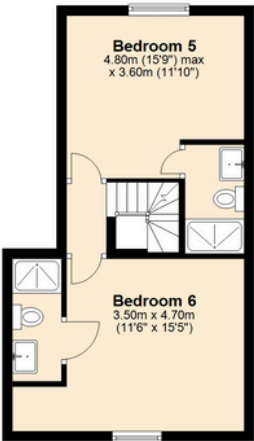
Ground Floor
Approx. 71.7 sq. metres (771.9 sq. feet)



First Floor
Approx. 31.6 sq. metres (340.6 sq. feet)



Second Floor
Approx. 31.6 sq. metres (339.9 sq. feet)



Total area: approx. 134.9 sq. metres (1452.5 sq. feet)
81 Dawlish Road

EPC

81 Dawlish Road
BIRMINGHAM
B29 7AF

Energy rating

C

Valid until

27 April 2032

Certificate number

2532-9824-1100-0788-5226

Score	Energy rating	Current	Potential
92+	A		
81-91	B		83 B
69-80	C	70 C	
55-68	D		
39-54	E		
21-38	F		
1-20	G		

House Hunt LTD, 550 Bristol Road, Selly Oak, Birmingham, B29 6BD
0121 4488 992
lettings@househuntltd.co.uk info@househuntltd.co.uk compliance@househuntltd.co.uk

