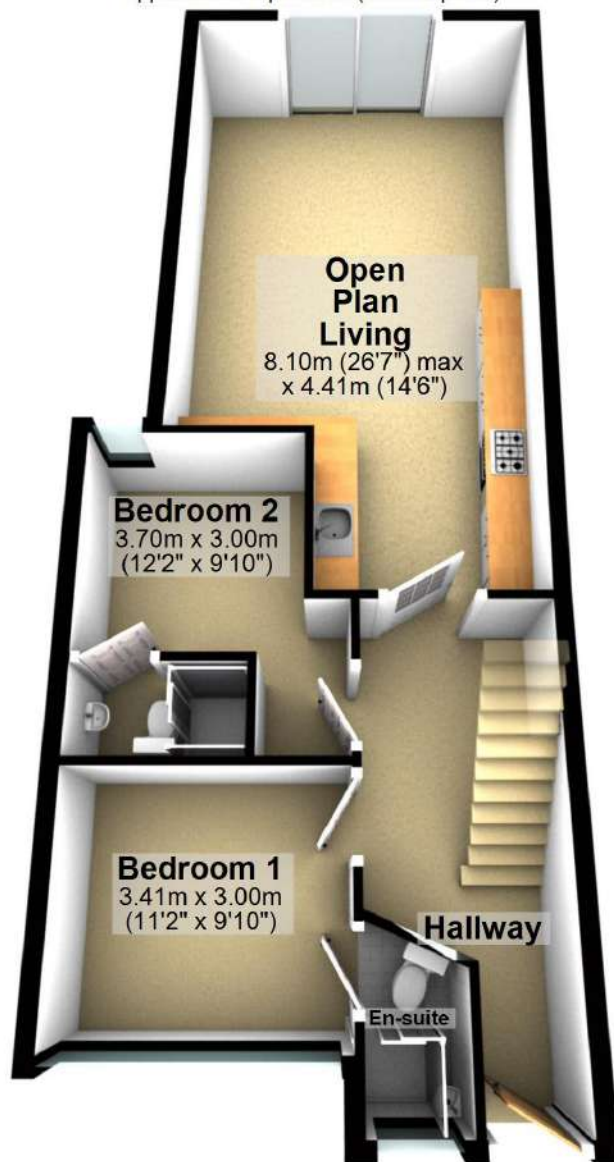


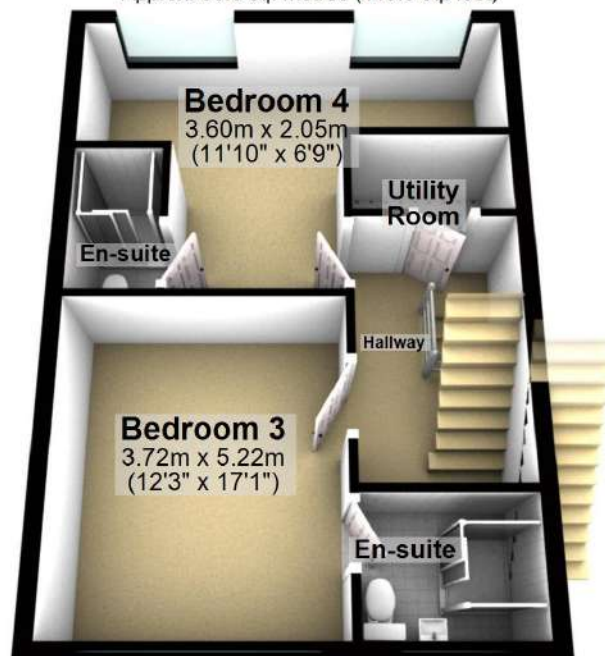
## Ground Floor

Approx. 62.8 sq. metres (675.8 sq. feet)



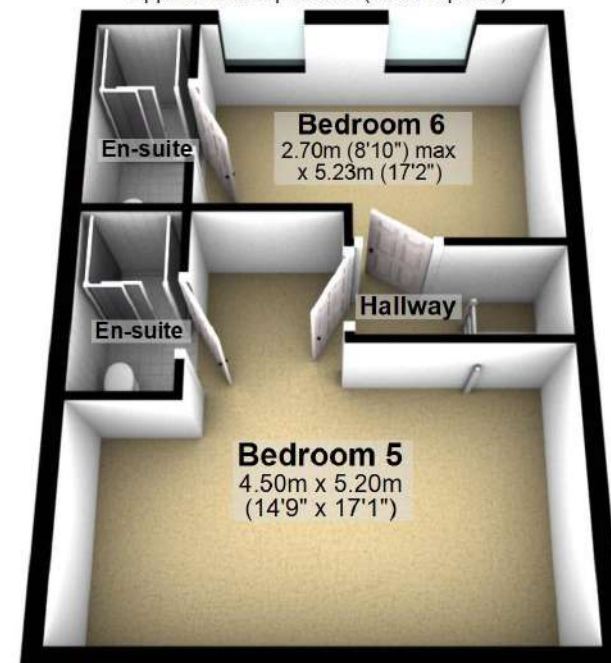
## First Floor

Approx. 38.6 sq. metres (415.8 sq. feet)



## Second Floor

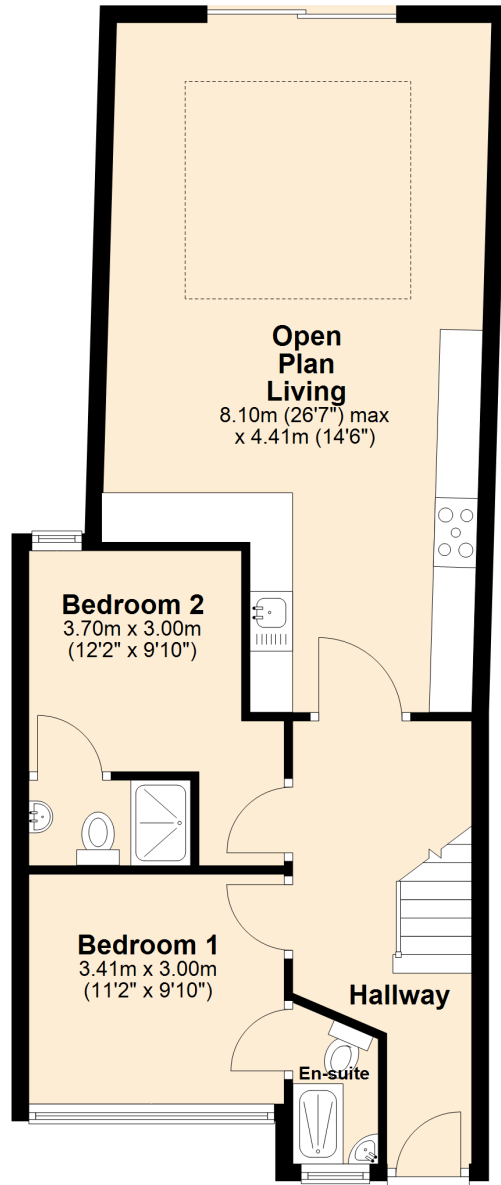
Approx. 35.9 sq. metres (386.3 sq. feet)



Total area: approx. 137.3 sq. metres (1478.0 sq. feet)

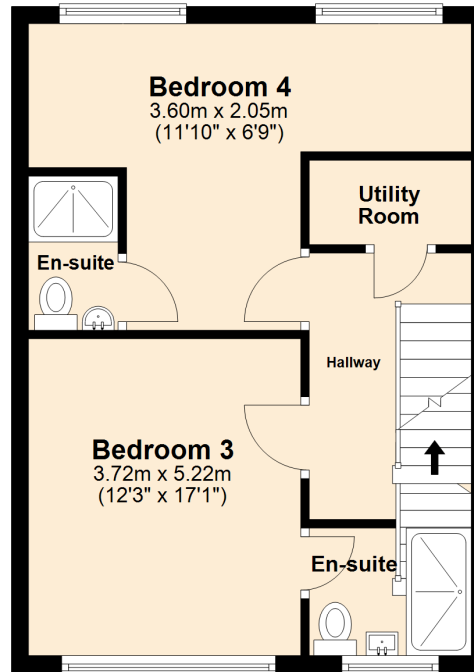
## Ground Floor

Approx. 62.8 sq. metres (675.8 sq. feet)



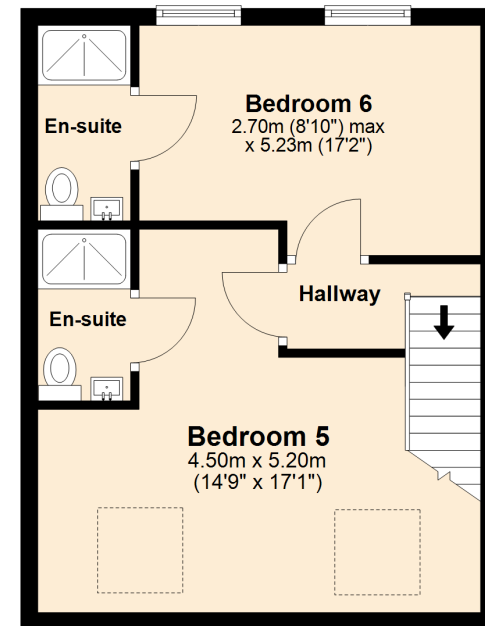
## First Floor

Approx. 38.6 sq. metres (415.8 sq. feet)



## Second Floor

Approx. 35.9 sq. metres (386.3 sq. feet)



Total area: approx. 137.3 sq. metres (1478.0 sq. feet)

**69b Raddlebarn Road, Selly Oak**