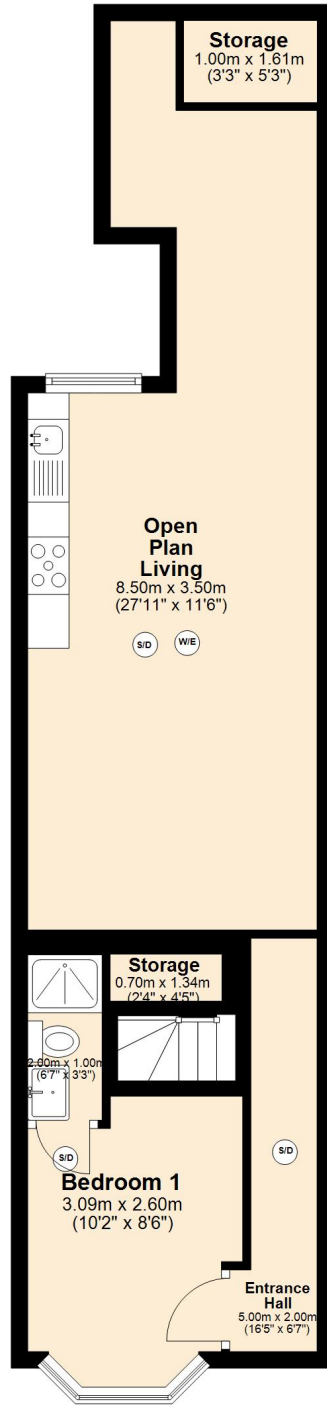
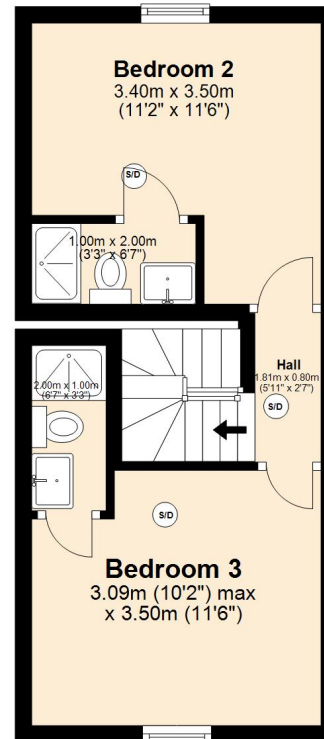


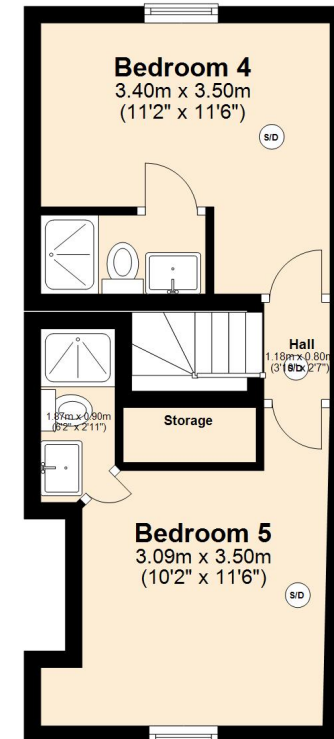
Ground Floor
 Approx. 47.8 sq. metres (514.5 sq. feet)



First Floor
 Approx. 25.9 sq. metres (279.3 sq. feet)



Second Floor
 Approx. 25.9 sq. metres (279.0 sq. feet)



Total area: approx. 99.7 sq. metres (1072.8 sq. feet)

3 Alton Road