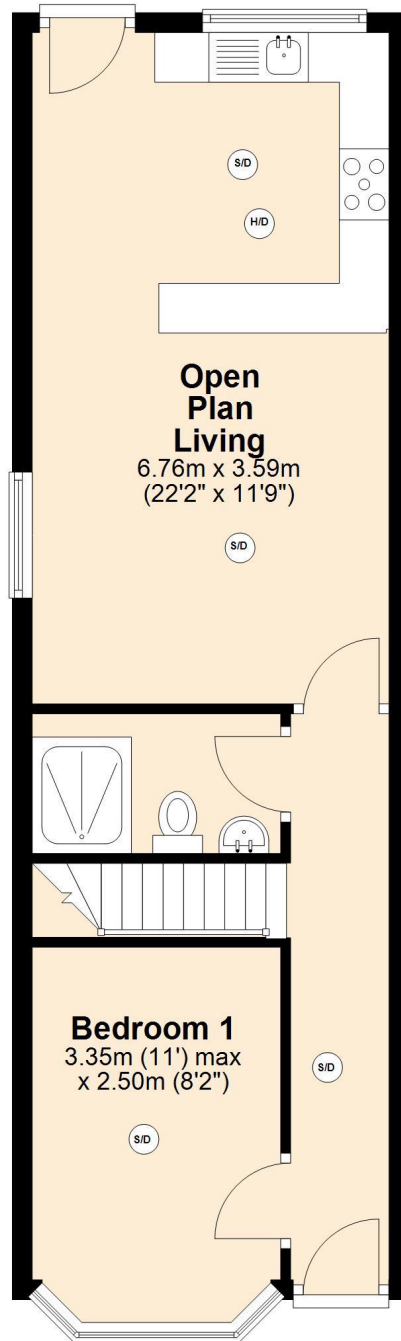


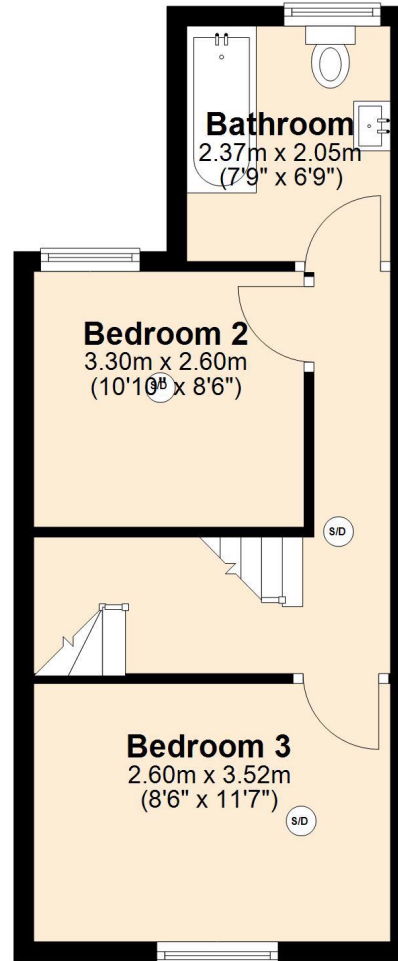
Ground Floor

Approx. 45.4 sq. metres (488.8 sq. feet)



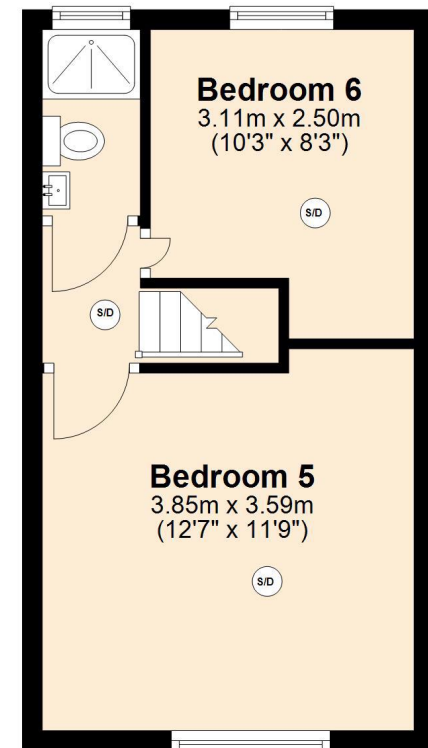
First Floor

Approx. 31.0 sq. metres (333.6 sq. feet)



Second Floor

Approx. 25.7 sq. metres (276.3 sq. feet)

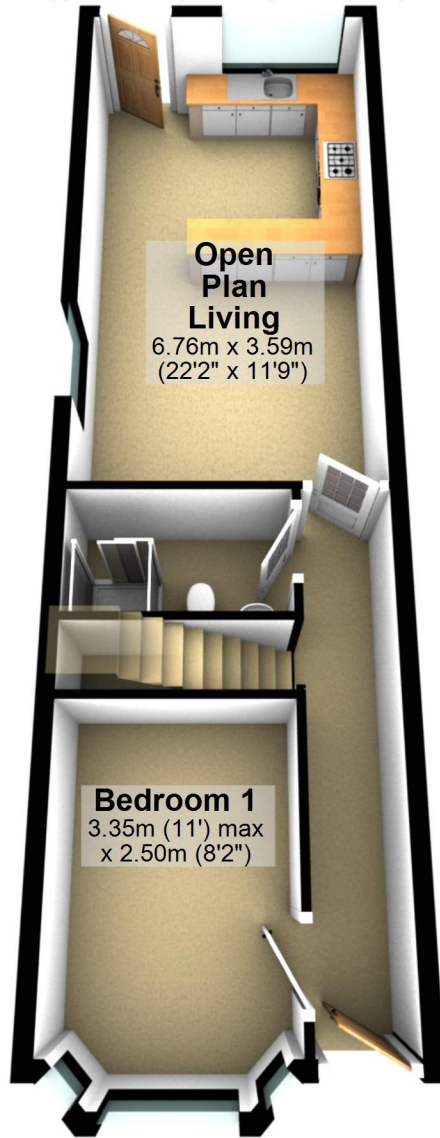


Total area: approx. 102.1 sq. metres (1098.8 sq. feet)

312 Tiverton Road

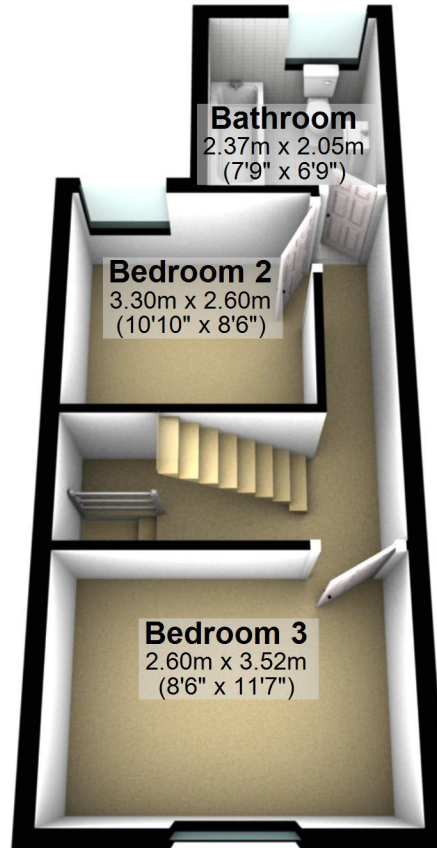
Ground Floor

Approx. 45.4 sq. metres (488.8 sq. feet)



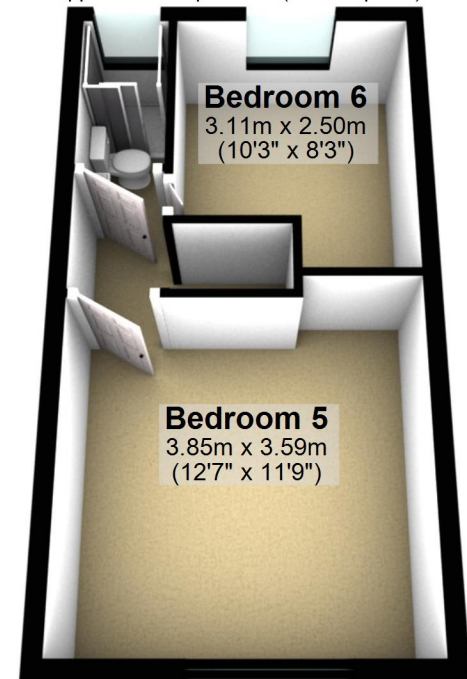
First Floor

Approx. 31.0 sq. metres (333.6 sq. feet)



Second Floor

Approx. 25.7 sq. metres (276.3 sq. feet)



Total area: approx. 102.1 sq. metres (1098.8 sq. feet)