

Ground Floor

Approx. 40.3 sq. metres (433.3 sq. feet)



First Floor

Approx. 30.2 sq. metres (324.6 sq. feet)



Total area: approx. 70.4 sq. metres (757.9 sq. feet)

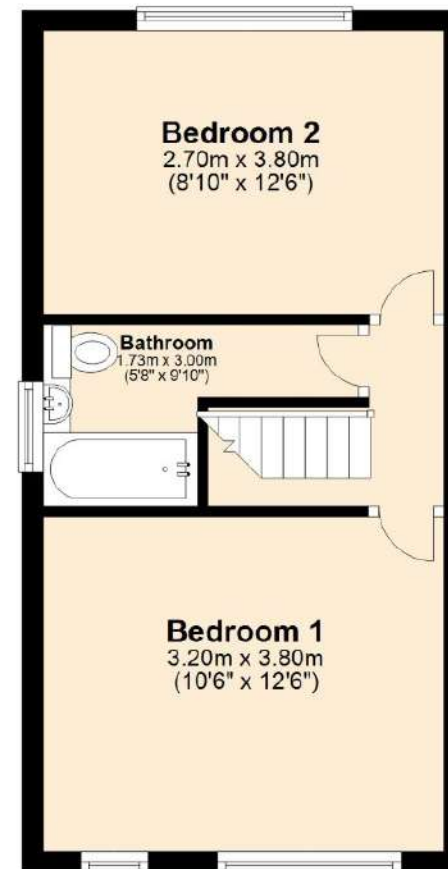
Ground Floor

Approx. 40.3 sq. metres (433.3 sq. feet)



First Floor

Approx. 30.2 sq. metres (324.6 sq. feet)



Total area: approx. 70.4 sq. metres (757.9 sq. feet)

239 Reservoir Road, Selly Oak