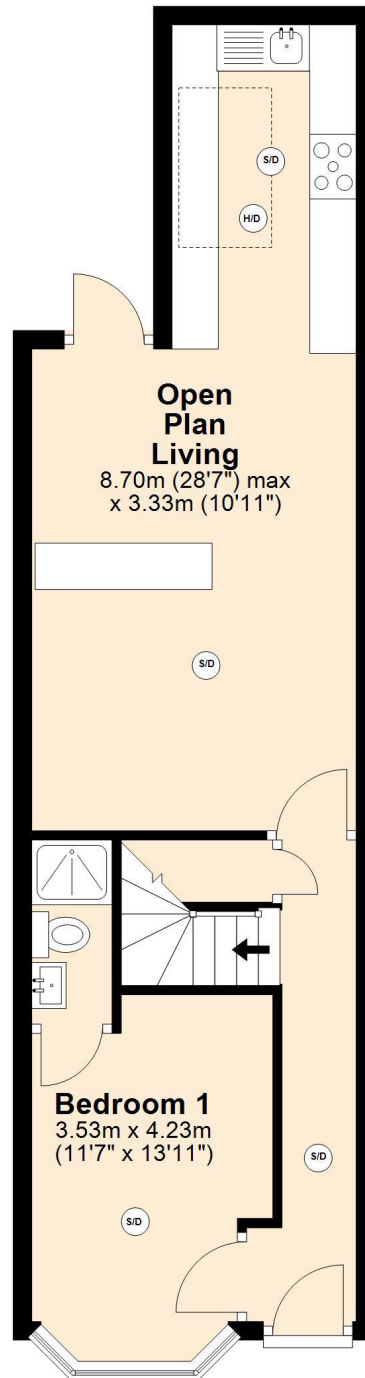


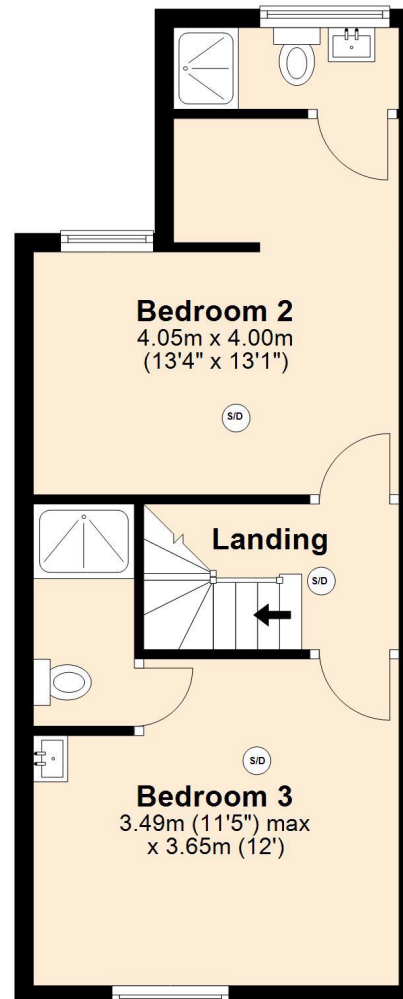
## Ground Floor

Approx. 42.5 sq. metres (457.6 sq. feet)



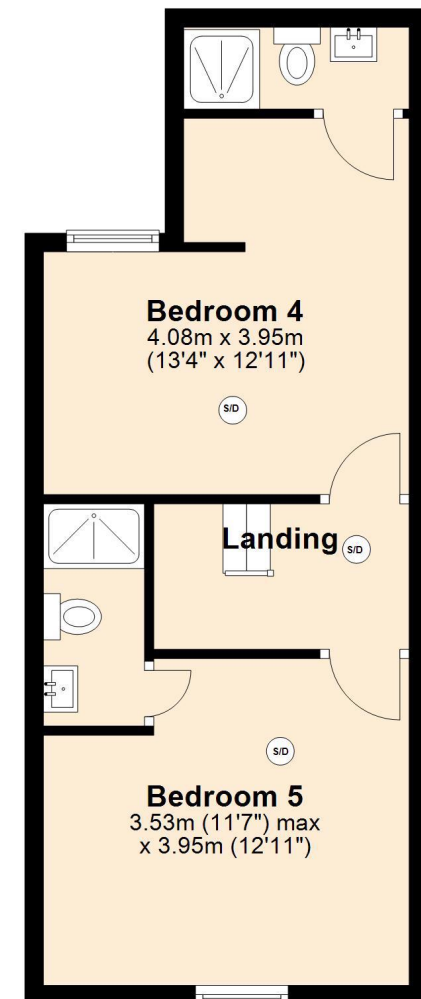
## First Floor

Approx. 36.4 sq. metres (392.2 sq. feet)



## Second Floor

Approx. 37.2 sq. metres (399.9 sq. feet)

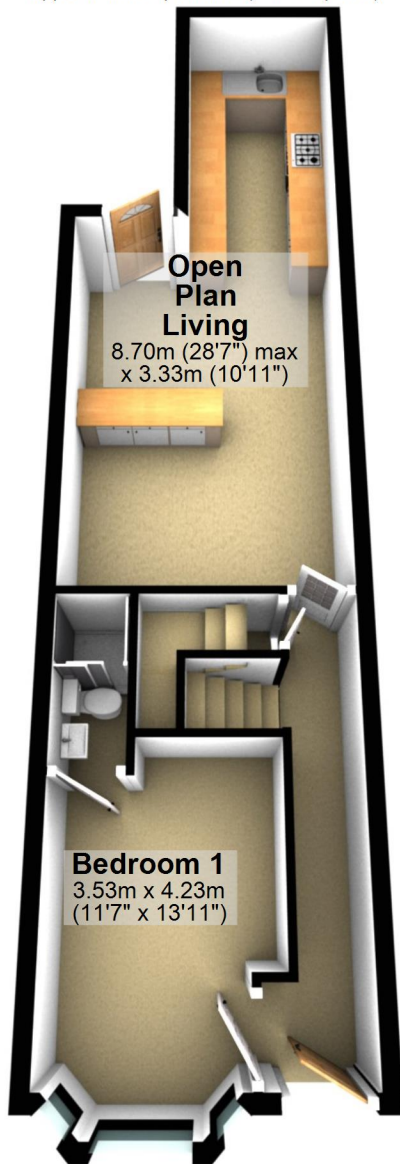


Total area: approx. 116.1 sq. metres (1249.8 sq. feet)

**139 Tiverton Road**

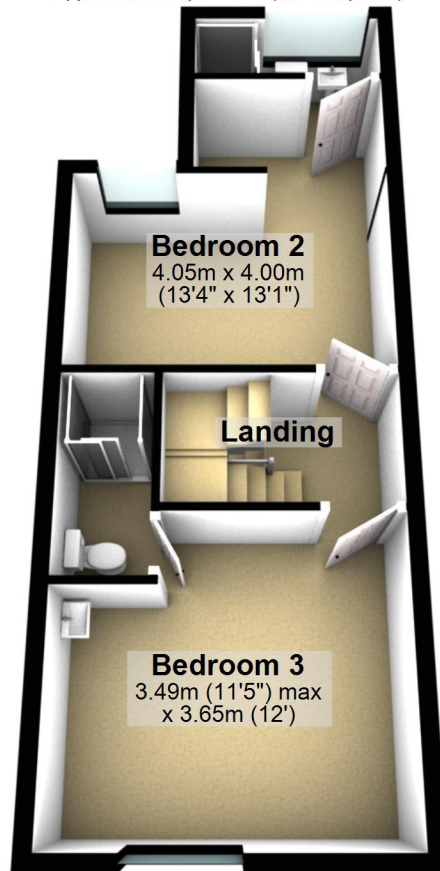
## Ground Floor

Approx. 42.5 sq. metres (457.6 sq. feet)



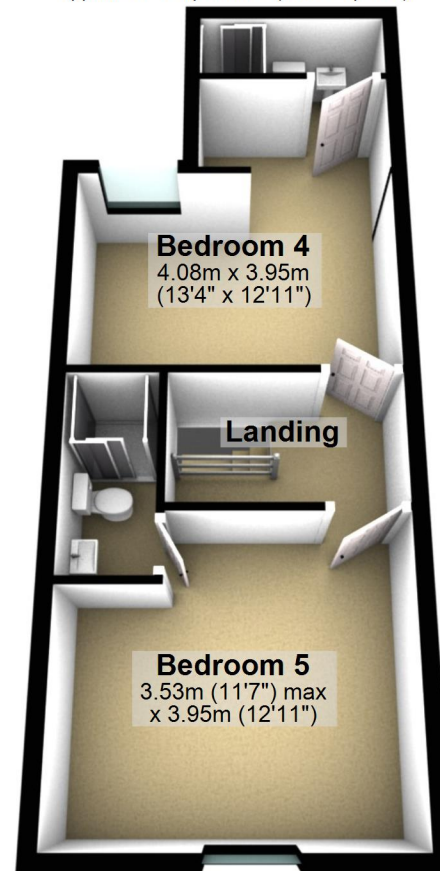
## First Floor

Approx. 36.4 sq. metres (392.2 sq. feet)



## Second Floor

Approx. 37.2 sq. metres (399.9 sq. feet)



Total area: approx. 116.1 sq. metres (1249.8 sq. feet)